



SPECTRUM™
Add-on Units

Sun's Spectrum units are custom designed to fit your finishing machine and are available for many machine models in a number of configurations. All Spectrum Units include:

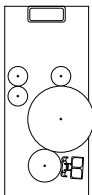
- Heavy duty frames and bearings
- Hardened steel gears
- Ringfeders instead of keyed attachments
- Operating adjustments that can be set to .001" accuracy

Units with Printing include:

- Sun's RainbowGraphics™ Chambered Doctor Blade System makes it easier to print solids, line and screen work while saving ink and providing quick clean up
 - Large reduction in ink lost at wash-up, saving ten's of thousands of dollars per year
 - Improved, consistent printing
 - Quick wash-up using a minimum of water
 - See RainbowGraphics brochure for full details
- Digital Harmonic Registers
 - Unprecedented accurate settings
 - Repeatability to .001"
 - Always remain "tight" with no lost motion and no maintenance required
- Quick change Anilox Rolls

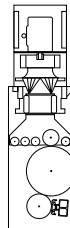
Units with Vacuum Transfer include:

- Sun's SunTrac™ Vacuum Transfer Unit that eliminates the need for pull bands and pull rolls and provides unsurpassed print-to-print registration
 - Drastically reduces color-to-color register variation
 - Reduces set-up time by eliminating many steps
 - Reduces scrap allowances
 - See SunTrac brochure for full details



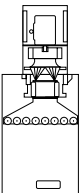
Conventional Print Units

- Eliminate second pass
- "No wrench" pull collars
- Chrome-plated pull rolls and impression cylinder



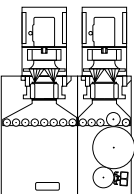
Print units with SunTrac Vacuum Transfer

- Unsurpassed color to color registration
- Fast set-up



Dwell units with SunTrac Vacuum Transfer

- Printing on the sheet is completed before starting die-cutting
- Additional time between printing and die-cutting
- Room for dryers of any type



Print/Dwell Units with SunTrac Vacuum Transfer

- An economical combination of the Print Unit and the Dwell Unit



**You need SUN
to grow.**

- SPECTRUM™ -

Add-on Units

General Technical Features

Frames, shafts, gears and bearings meet or exceed OEM specifications
Sun's proprietary products included in Spectrum Units, such as *RainbowGraphics™* chambered doctor blades, *SunTrac™* vacuum transfer and *Digital Harmonic Registers*, provide performance unsurpassed in the industry.

All adjustments, including board caliper, anilox roll-to-plate pressure and register position can be set within .001"

The operator interface is simple and intuitive with a minimum number of controls.
A message screen keeps the operator informed of the status of the unit at all times.

ROI Considerations

<i>FACTOR</i>	<i>QUANTIFIABLE BENEFIT</i>
Eliminate double pass	Cut machine center time in half
Ink lost at wash-up	7 lbs with 2 roll system 1 lb with <i>RainbowGraphics</i>
Reduced set-up time	5 minute wash up with <i>RainbowGraphics</i> No pull bands or pull collars to set with <i>SunTrac</i> Accurate settings eliminate trial and error at set-up
Scrap Savings	Eliminate trim for pull bands and Pull collars with <i>SunTrac</i>



410-472-2900 • sales@sunautomation.com
+31 313 490293 • info@sunautomation-europe.com